

Money-saving coupons! Weekly football contest

ANTLERS AMERICAN

WEEK OF October 11, 2007

50 CENTS

Ethanol plant to open

By Guen Tucker-Smith
Staff Writer

We sit in admiration of visionaries such as Henry Ford, who designed the Model T in October 1908. The Model T was designed to use ethanol, which Ford called the fuel of the future.

Nearly a century later, David McDowell's vision of ethanol production helps bring Ford's prediction to fruition with the most efficient ethanol production system to date. McDowell did this by eliminating water in the production process.

Forward-thinking Antlers city officials have purchased one of FASTech's systems and will be the first city to produce its own fuel, said

Joel Taylor, City Manager. Taylor said he expects the city to cut fuel costs in half once the system is in full swing and that the city also will sell fuel to distributors.

McDowell, an ASE Certified Master Mechanic from Lane, and wife, Donna, co-founders of FASTech LLC, expect to be in full production within 60 days with their first Oklahoma production, research and development plant located on Hwy 271 North in Antlers. McDowell said plans are in the works to add pumps for vehicle-use sales.

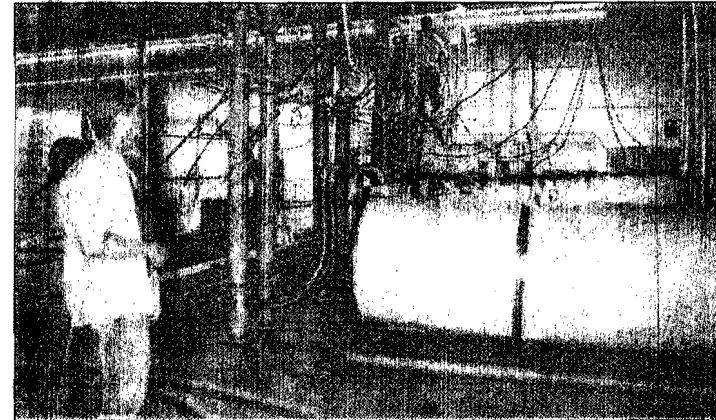
When at full capacity, the plant will employ approximately 35 people, said Sharon Glidden, Marketing

and Public Relations Director.

FASTech's system produces ethanol at 99 percent purity

with a commercial flow rate. McDowell's system produces a 199.97 percent proof on the first run, he said. FASTech's ethanol production is based on sugar, which eliminates several steps needed to turn feedstock, such as corn, into sugar, but the FASTech system can be used with the corn systems also.

This is an improvement of other systems that require about 10-11 days production



Antlers American: Guen Tucker-Smith
David McDowell, co-founder of FASTech LLC, oversees operations at FASTech LLC, located on Hwy 271 North in Antlers. FASTech produces the most efficient ethanol system, which is capable of generating ethanol that can be transported by pipeline and is 199.97 percent proof on the first run.

See "Ethanol"
Page 2A

ETHANOL

time and corn wet mill systems that take two to three weeks, partly due to water removal requirements, and produce 150 to 190 percent profit. These systems are familiar to most Americans and use starch based platform such as corn. These systems also cannot produce a product capable of being transported by pipeline due to water separation issues. McDowell's system can be transported by pipeline because it does not separate

since there is no water, he explained.

McDowell said he became interested in ethanol production after reading an article about Ford.

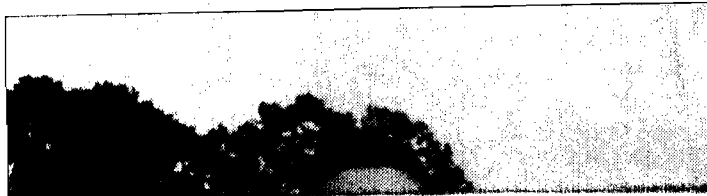
"Henry Ford wanted America to be independent and self reliant," McDowell explained, adding one way for that to happen is for farmers and ranchers to produce their own fuel as efficiently as possible.

McDowell said Antlers city officials, including Taylor

and Mayor Brent Franks, have been very supportive of the newest addition to local industry and that the city has bought the first system.

According to Taylor, the city will build a production site behind Antlers Livestock LLC sale barn and hope to be up and running by the first of next year.

FASTech is located in the old Red Cap Building, which they purchased from the City of Antlers Industrial Authority.



SUIT

jurisdiction in a particular case, specifically naming the case intended to revoke Kozel's beverage license.

Then on Tuesday, Oct. 9, the State of Oklahoma filed a motion to stay with the district court for case number CV-2007-49, a

petition to revoke Kozel's beverage license for low-point beer sales in Wranglers.

The current legal battles stem from misdemeanor charges filed against Kozel in March, claiming that underage patrons were allowed in Wranglers. In

April, missed pending declaration by Kozel. Oral been : Wedne Suprer Oklaho

CASE

erty. The investigation stated agents found numerous piles of raw sewage and grease that had been dumped on open fields of Taylor's

property. Also, debris including toilet paper and paper towels was found, as well as a ditch containing several thousand gallons of septic waste.

At the tion, agents dumpe on his

